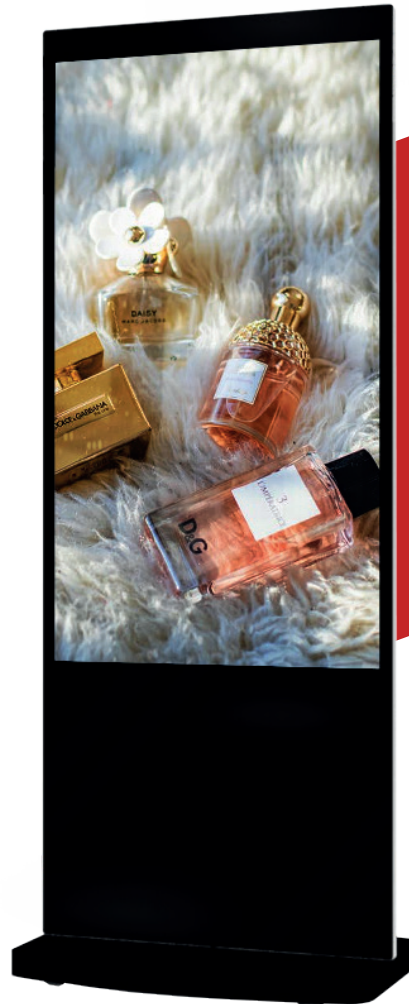


# ASL Freestanding

50" | 55"



## Turn heads with the TOPAZ Freestanding Display with the power of Android and functionality

Our Freestanding ASL Series Displays are proven to be real attention grabbers and stand out in a busy commercial environment providing businesses a fresh approach to digital signage... an 'Out of the Box, Fully Inclusive' approach which enables businesses to control and manage costs and deployment in a more effective way.

With our latest Android powered Freestanding screens, the functionality has increased delivering even more benefits for your business.

Available in sizes 50" and 55", and colours black or white perfect for any establishment. These displays run on the same TOPAZ CMS platform as ASL range and CMS Media Players which means you can easily mix your TOPAZ Products on your network.

Our ASL Freestanding Displays are perfect for any indoor settings, we have previously installed these displays in Hotels, Retail Stores, Restaurants and Gyms.

## Key Features



24/7 Usage



Android OS



Multiple Inputs



On/Off Power timer

### Toughened Glass

Improves tactility for smoother touch gestures, especially useful when there is more than one user touching the screen. The anti-glare nano coating also diffuses external light so that images and videos are much clearer.

### Tablet Style Design

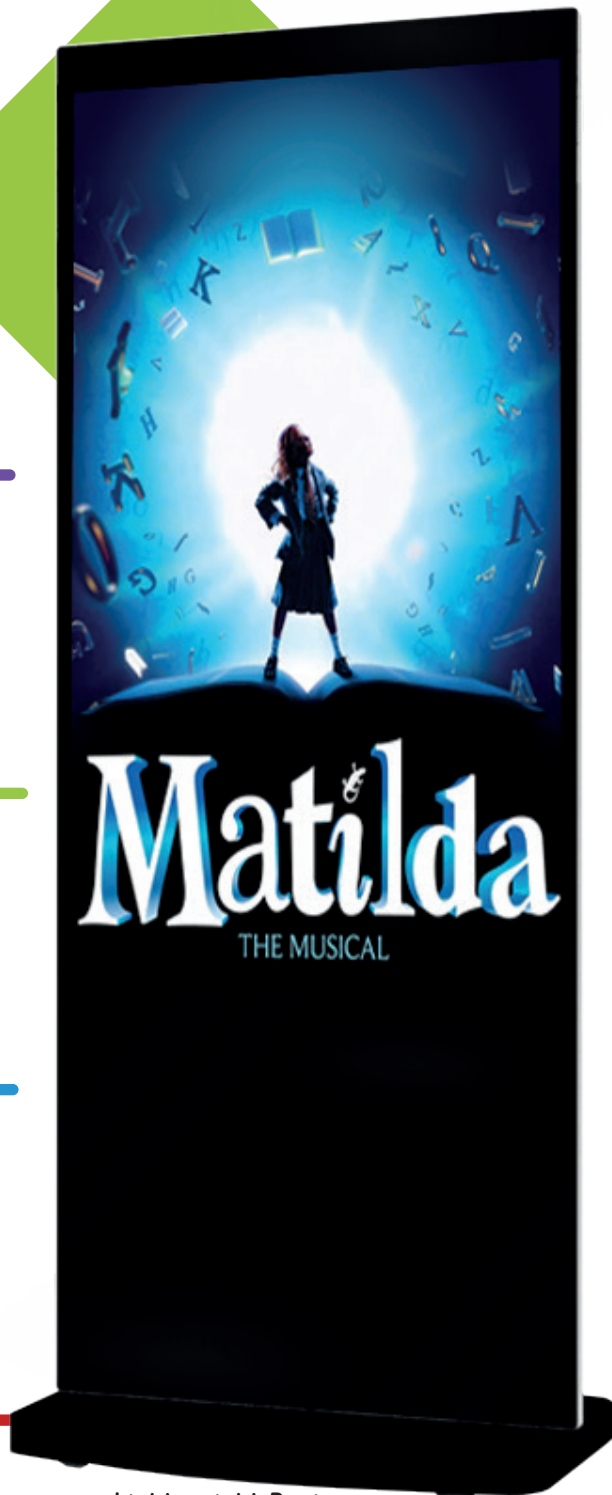
The TOPAZ ASL Series features edge to edge tempered glass, rounded corners & a brushed aluminium frame to create a stylish and sophisticated Tablet style finish ensuring your message stands out and creates the WOW factor.

### Lightweight Design

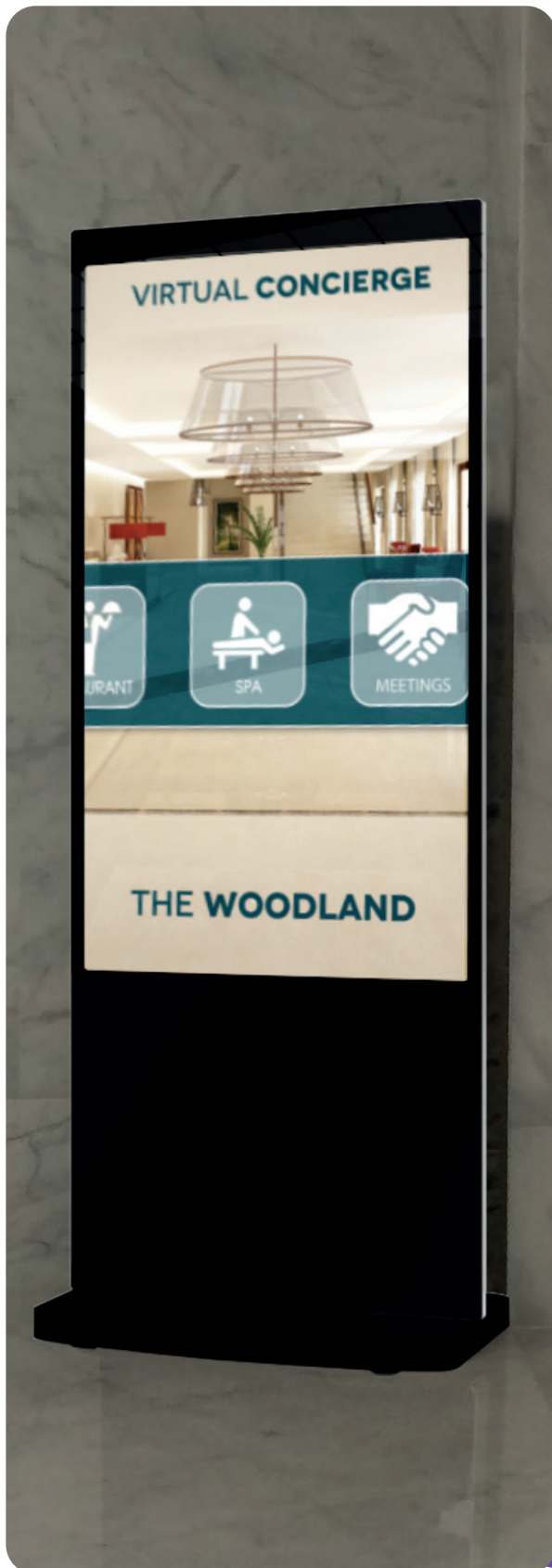
By using less and lighter materials, component weight is kept to a minimum. This compact design makes both installation and maintenance much more convenient.

### Designed for Digital Signage

Unlike a TV, the TOPAZ™ ASL Series are designed specifically for Digital Signage.... This means that they all feature commercial grade panels, can operate in either Portrait or Landscape & that they are designed to run 24/7.... Giving you maximum ROI.



## Product Images

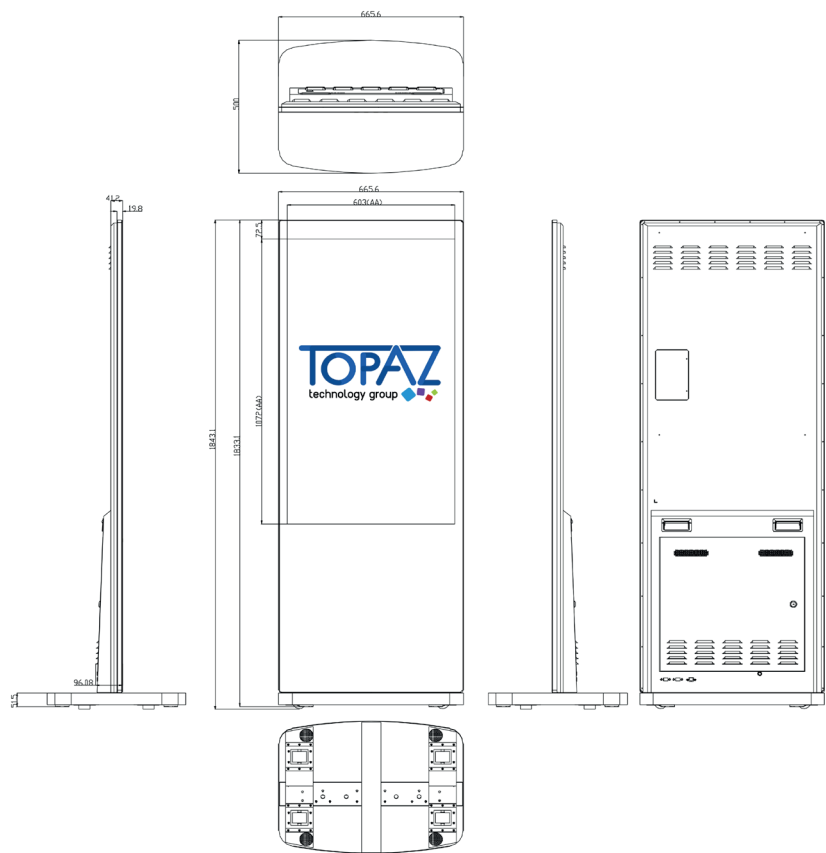


# Technical Specifications

		50"	55"
Display	Unit Size (wxhxd mm)	1843.1 x 665.6 x 41.2	1911.5 x 744 x 41.2
	Unit Weight (kg)	58	69.5
	Display Area (mm)	603 x 1072	681.4 x 1210.6
	Speaker Type	10W, 4Ω (x2)	10W, 4Ω (x2)
	Resolution	1080 x 1920	1080 x 1920
	Aspect Ratio	16:9	16:9
	Brightness (cd/m2)	450	450
	Contrast Ratio	5000:1	5000:1
	Colour	16.7m	16.7m
	Viewing Angle	178°	178°
	Input Voltage	AC110-240V (50Hz-60Hz)	AC110-240V (50Hz-60Hz)
	Working Temperature	0°C to 50°C	0°C to 50°C
AV Inputs	Video	HDMI & VGA	
	Audio	Audio Socket 3.5mm	
Internal Media Player	Media Resolution	1920 x 1080/1080 x 1920	
	Internal Memory	8GB	
	CPU	Quad-Core ARM Cortex A17, 1.6GHz	
	GPU	Quad-Core ARM Mali-T764	
	RAM	2GB DDR3	
	ROM	8GB eMMC	
	USB	1 x USB (OTG/HOST), 1 x USB (HOST)	
	LAN	100/1000M Ethernet	
	WiFi	802.11b/g/n/ac	
	OS	Android 7.1	
	Graphic Engine	OpenGL ES 1.1/2.0/3.0/3.1, OpenCL 1.1, Renderscript, Direct3D 11.1	
	Software	TOPAZ CMS	
	Media Formats	Video: MPG4 / Image: JPG	

# Technical Drawing

50"



55"

