

Outdoor Wall Mounted ASL

32" | 43" | 50" | 55"



Reach You Customers Whatever The Weather With The TOPAZ Outdoor Display Range

Our outdoor range combines all the benefits of our Android SL displays with the added benefit of being housed in a robust IP65 rated enclosure ensuring your message can be broadcast regardless of the weather.

You benefit from all the same design qualities of the ASL displays with the rounded corners and aluminium edging together with all the in-built power and functionality including the 'Out of the Box, Fully Inclusive' approach which means there are never any recurring costs with everything you need included!

The Wall Mounted Outdoor Displays are available in a range of sizes.

Upgrade the displays to include Touch Screen too, take advantage of the tablet like aesthetics making for instantly recognisable user friendly aesthetic.

Perfect for any outdoor environment.

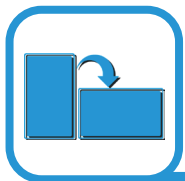
Key Features



Touch Screen
Available



Smart Temperature
Control



Portrait or
Landscape



IP65 Rated
Enclosure



Sunlight Readable

Brightness is paramount when using outdoor screens, these displays use commercial grade Ultra High Brightness panels (2500 cd/m2); more than 4 times brighter than a standard home TV to allow easy readability in direct sunlight

Eco-Friendly Power Timer

Reduce your power consumption by automatically scheduling the screen to Power on or off. This allows you to automate when the screen is active & shut it off when your business is closed....ideal for a public environment!

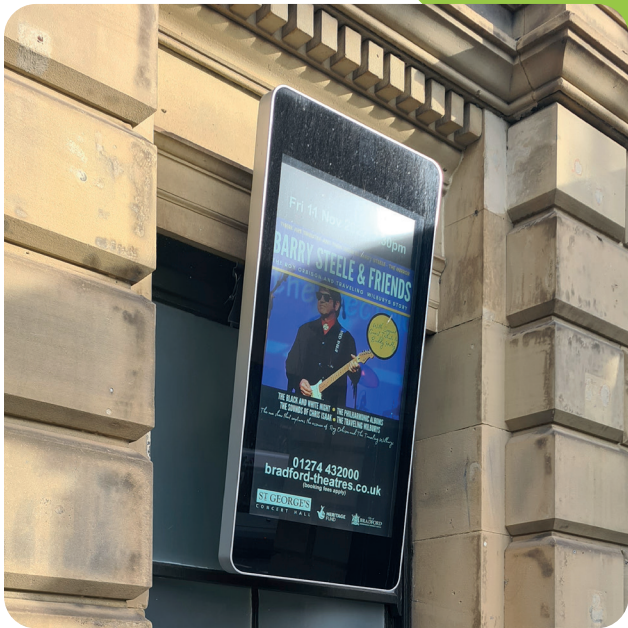
Outdoor Enclosure

Designed with robust, corrosion protected, casing to protect against the elements and the public. With an IP65 rating, it keeps out all airborne particles as well as being protected from any wet weather conditions and also feature waterproof over moulded AV connectors.

Anti-Reflective Glass

The anti-reflective glass enables your customers to see and read what your displays are showing. Perfect for sunny, bright days in the summer. Making these displays visible all year round.

Product Images



Technical Specifications

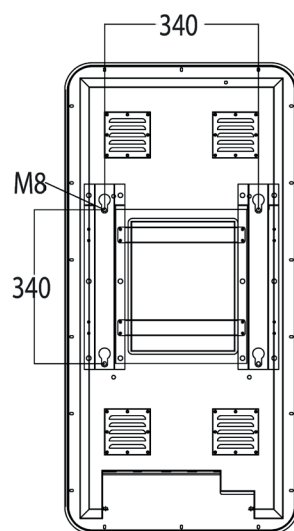
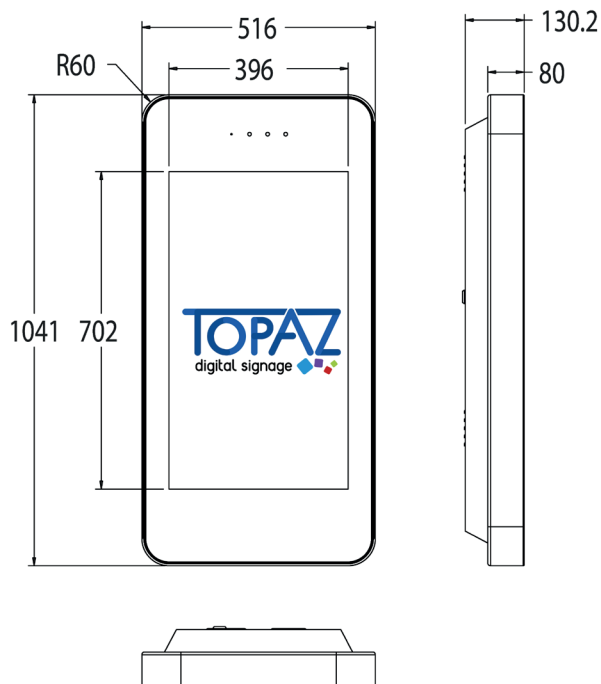
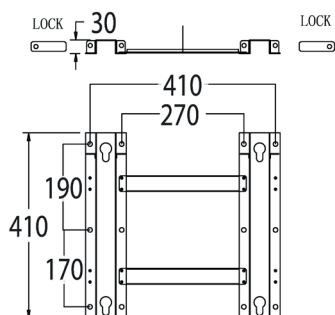
		32"	43"	50"	55"
Display	Resolution	1920 x 1080	1920 x 1080	1920 x 1080	1920 x 1080
	Display Area (mm)	702 x 396	941 x 529	1030 x 603	1215 x 686
	Aspect Ratio	16:9	16:9	16:9	16:9
	Brightness (cd/m2)	2500	2500	2500	2500
	Colour	16.7m	16.7m	16.7m	16.7m
	Viewing Angle	178°	178°	178°	178°
	Contrast Ratio	8000:1	8000:1	8000:1	8000:1
	Unit Size (WxHxD mm)	1041 x 516 x 130.2	757.8 x 452.3 x 49.3	997.6 x 585.8 x 50	1135.2 x 665.4 x 63.2
	Vesa Hole (mm)	340 x 340	340 x 340	340 x 340	340 x 340
	Gross Weight (kg)	48	82.5	101	115.5
	IK Rating	IK10	IK10	IK10	IK10
Environmental	IP Rating	IP65			
	Operating Temperature	-20 °C to 50 °C			
	Glass Hardness	4H Minimum			
Touch (Optional)	Touch Technology	Projected Capacitive			
	Touch Points	10			
	Operating Humidity	10% - 80%			
Power	Power Consumption (W)	190	250	300	
	Input Voltage	AC110~240V (50Hz~60Hz)			
AV Inputs	Video	HDMI & VGA			
Internal Media Player	Media Resolution	1920 x 1080/1080 x 1920			
	CPU	Quad-Core Cortex-A17@1.61GHz			
	GPU	Mali-T760 MP4 @600MHz			
	RAM	2GB DDR3			
	Internal Storage	8GB NAND			
	Internal Memory	6GB			
	USB	USB2.0 HOST (x2)			
	LAN	10/100/1000M Ethernet			
	WiFi	802.11b/g/n/ac			
	OS	Android 5.1.1			
	Graphic Engine	OpenGL ES 1.1/2.0/3.0/3.1, OpenCL 1.1, Renderscript, Direct3D 11.1			
	Software	TOPAZ CMS			
	Media Formats	Video: MPG4 / Image: JPG			

Technical Drawing



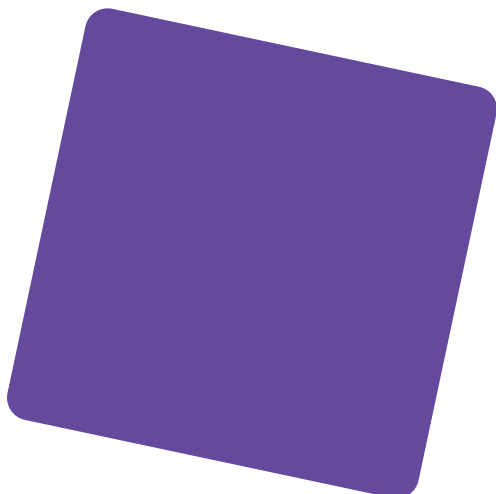
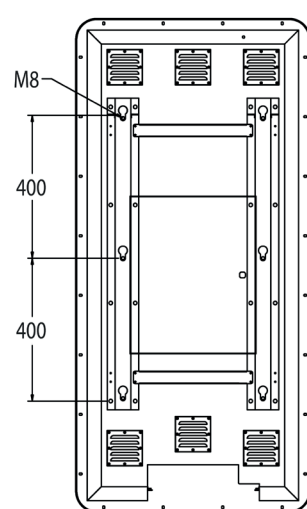
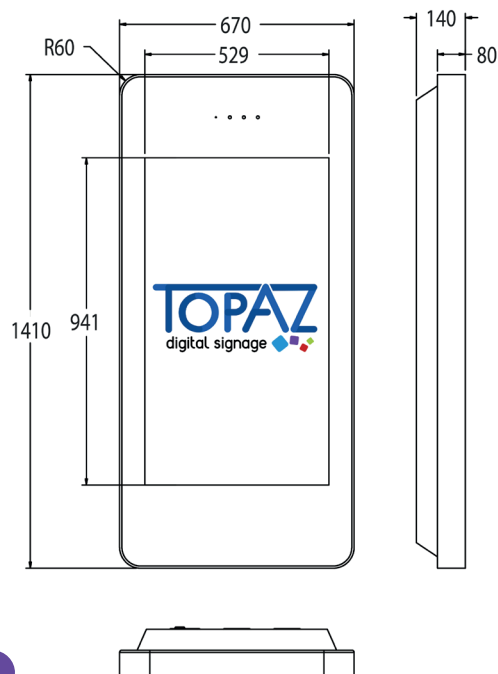
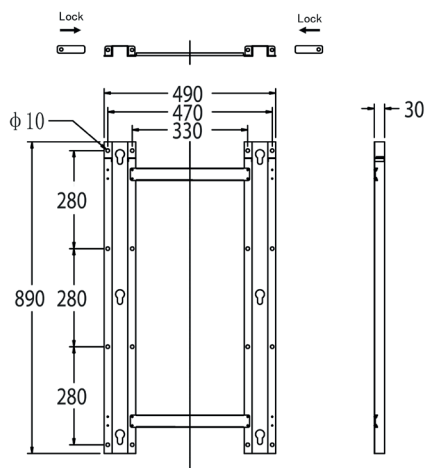
32"

Bracket



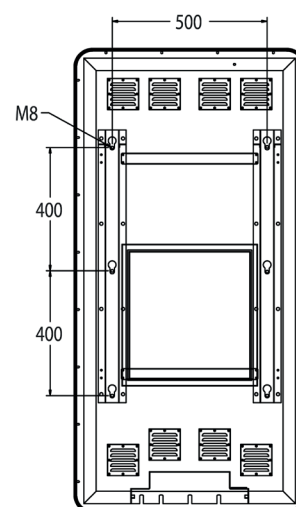
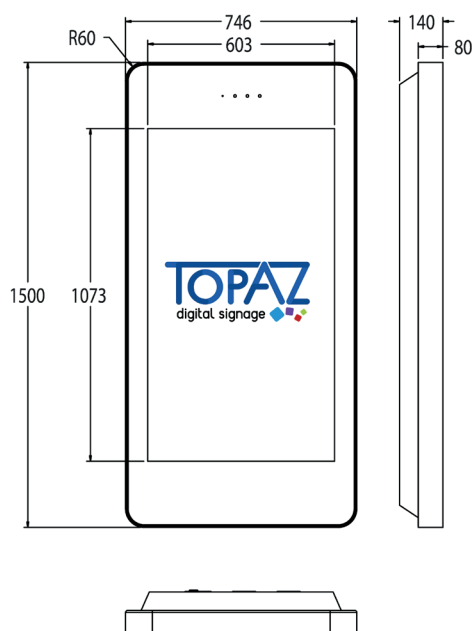
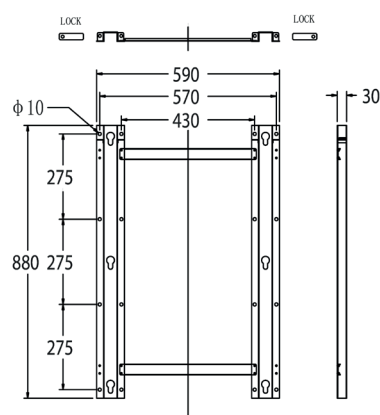
43"

Bracket



Technical Drawing

50" | Bracket



55" | Bracket

